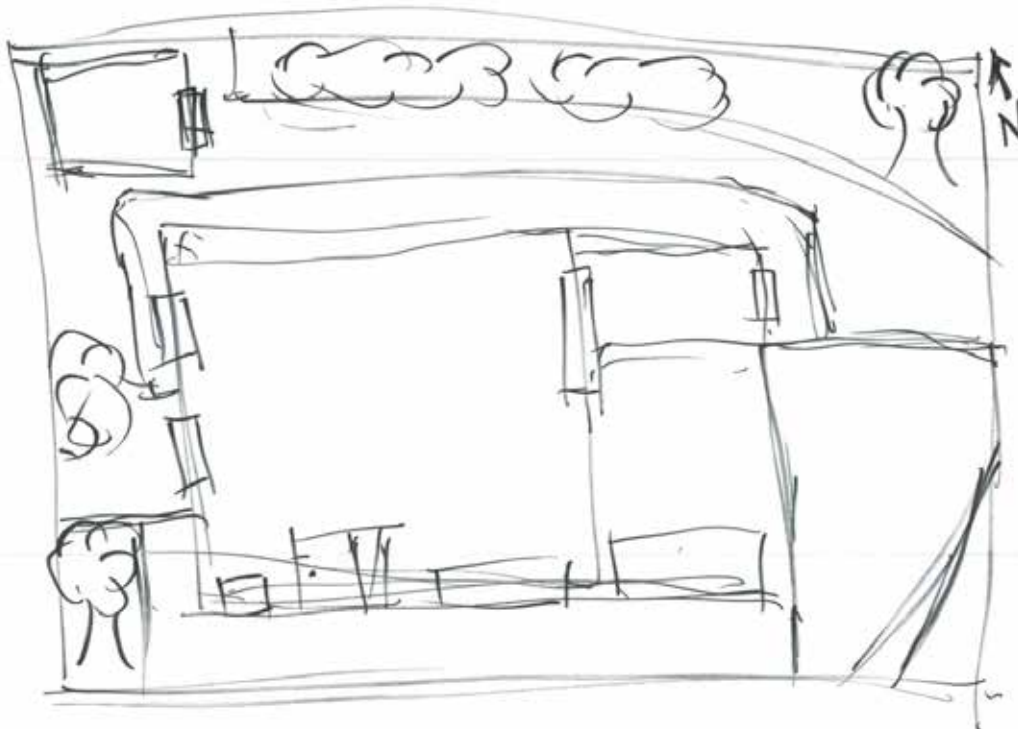


SITE PLAN INSTRUCTIONS

1. Every box = One square metre.
2. Generally, one long step = one metre. Walk the four perimeters of your property taking note of each length on the graph paper.
3. From the front-left corner of your property find the front left corner of your dwelling.
Take note of where it sits on the property.
4. Once you've established this corner of the dwelling, please plot the following:
 - Dimensions of your dwelling
 - Driveway
 - Any other structures (decks, garages, walls, fences, etc)
 - Existing trees
 - Trees to be removed
 - Any other large trees within 2 meters of the property line
5. Utilities above and below ground (if known).
 - Water
 - Sewer
 - Gas
 - Electrical
 - Power lines
6. Access points for delivery and machinery on the property.
7. Orientation (which way is North).
8. New landscaping areas where you would like work on.
 - New trees, garden beds, patios, water features, pathways, play areas
turf areas





EARLY UP
0448 300 736
admin@eups.com.au
www.eups.com.au

Scale: One box = One metre

